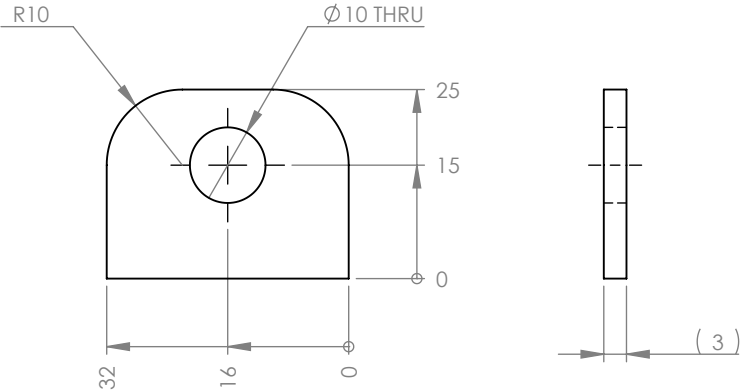


STAINLESS VERSION OF EXISTING STEEL LEG PART P00055.



DO NOT SCALE DRAWING			
UNLESS OTHERWISE SPECIFIED: <ul style="list-style-type: none">• Drawing is in Third Angle projection• All dimensions are in millimetres• Tolerances $\pm 0.5\text{mm}$ (parts) $\pm 1\text{mm}$ (assemblies), $\pm 0.5^\circ$• Debur and break sharp edges			
PROPRIETARY and CONFIDENTIAL. Information contained in this drawing is the sole property of Ultimate Campers. Any reproduction in part of as a whole without the written permission of Ultimate Campers is prohibited.			
	NAME	SIGNATURE	DATE
DRAWN	ROSS DAWE		28-04-25
CHK'D			
APPV'D			
MFG			
Q.A			

QUANTITY: UP TO 4 PER CAMPER (OPT.)
MATERIAL: SSSH 304 3.00
FINISH:
WEIGHT: 16.28g

 <div>ULTIMATE</div>		ULTIMATE OFF ROAD CAMPERS 39-41 Shelley Rd, Moruya, NSW 2537 T: 1300 500 077 W: www.ultimatecampers.com.au	
CAMPER SERIES:			
X-SERIES - OUTRIGGER LEG			
DESCRIPTION:			
Outrigger Leg - Brace Tab - SS			
DRAWING NAME:			A4
P00979 1.0			
SCALE:1:1		SHEET 1 OF 2	